

SPORTING 2 SECURITHERM ELECTRONIC SHOWER PANEL

A simple and stylish anti-Legionella solution



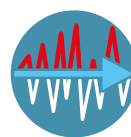
SPORTING 2 SECURITHERM, shower panel ref. 714910



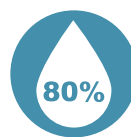
Hygiene and infection control



Anti-scalding safety



Temperature stability



80% water savings

Hot on the heels of the success of our top inlet model, here is yet more innovative design! Meet the SPORTING 2 SECURITHERM with recessed inlets: elegance, hygiene and security are the order of the day.

Impeccable hygiene

Thanks to its electronic technology, there is no need for manual contact when using the SPORTING 2 SECURITHERM, preventing the spread of germs. The flow opens and shuts off when the sensor detects a hand. A 60-second duty flush occurs every 24 hours after the last use to purge the water distribution system. This helps in the fight against bacterial proliferation which occurs when water stagnates in the pipework. A scale-resistant shower head adds to its hygienic attributes.

Preventative anti-Legionella solution

Legionella bacteria develop between 25 and 45°C, and in stagnant water. We recommend mixing the water as close as possible to the point-of-use to prevent its development. The SPORTING 2 SECURITHERM is an ideal solution: the shower panel is supplied directly by the hot water distribution system (at temperatures above 50°C) and by cold water also from the system. The thermostatic mixing valve integrated in the shower head blends the water to 38°C and delivers it immediately. There is no mixed water circulating between the hot water system and the shower, nor is there any standing water in the shower panel.

Optimal anti-scalding safety

SECURITHERM technology ensures the user's safety. It eradicates the risk of scalding thanks to the thermostatic mixing valve integrated within the shower head. If the cold water supply fails, the mechanism shuts off automatically to avoid delivering scalding hot water. The mixed water temperature can be pre-set by the installer.

Comfort for all

The mixer delivers a stable temperature regardless of pressure variations in the system, ensuring the user's comfort. If the hot water supply fails, the shower shuts off automatically to prevent cold showers. The comfort shower head has a rain-effect spray, creating an inviting and enveloping shower, with an ideal flow rate.

Installation and maintenance adapted for all configurations

This shower panel is designed to simplify installation. Currently available with exposed inlets, our newly launched model has recessed inlets (to be connected from above or below). This latest model is supplied in two kits. The first contains a compact nanny joint, allowing for a secured system purge prior to installation, thanks to temporary blocking caps. The second contains the shower panel, which is delivered directly to the building site when it is time for mounting. Lastly, maintenance is simplified, with direct access to the filters and non-return valves; and integrated stopcocks.

An economical and ecological solution

The SPORTING 2 SECURITHERM shower panel can deliver water savings of up to 80% compared to a conventional shower. The water flow can be interrupted at any moment by the user simply by passing their hand in front of the sensor. If the user forgets, shut-off is automatic after 60 seconds, preventing waste. Finally, the flow rate is controlled and pre-set at 6 litres per minute.

An acclaimed design

Its minimalist design and innovative features have been commended by prestigious international awards.

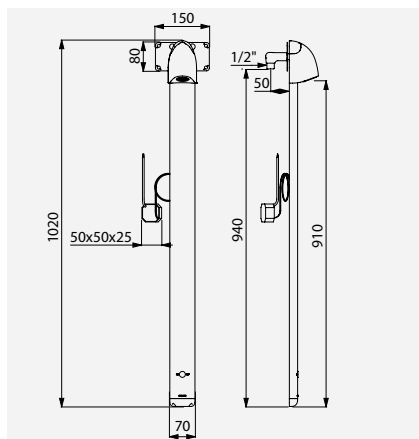
WINNER OF MULTIPLE AWARDS:



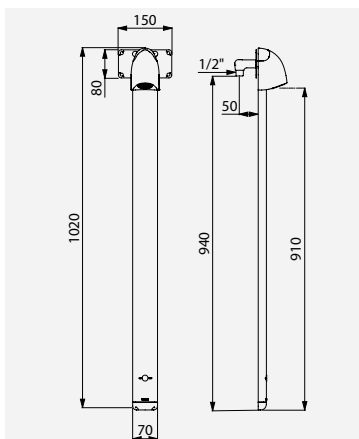
PRODUCT BRIEF / SPORTING 2 SECURITHERM

The SPORTING 2 SECURITHERM is completely hygienic: there is no manual contact, and a daily duty flush prevents the growth of bacteria. With SECURITHERM technology, the user benefits from total safety (anti-Legionella solution, anti-scalding system) and optimal comfort. To simplify its installation, it is available in several versions to adapt easily to the installation type. Economical and ecological, it delivers up to 80% water savings and minimises waste. It has been rewarded with multiple prizes for its innovative technology.

Images available on our website delabie.co.uk, in the PRESS section

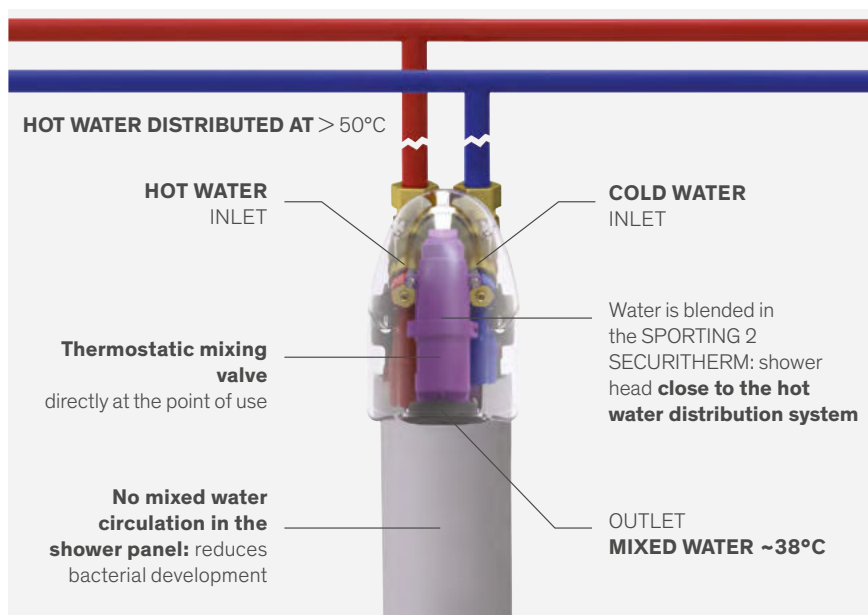


SPORTING 2 SECURITHERM electronic shower panel with mains supply, recessed inlets
DELABIE refs.: 714910 + 714012



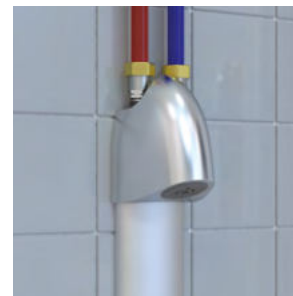
SPORTING 2 SECURITHERM battery-operated electronic shower panel, recessed inlets
DELABIE refs.: 714916 + 714612

THERMOSTATIC MIXING VALVE AT THE POINT-OF-USE

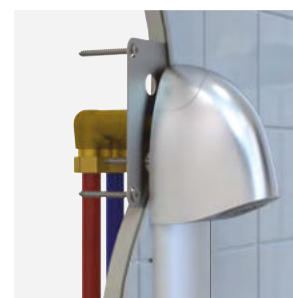


Integrated anti-Legionella solution

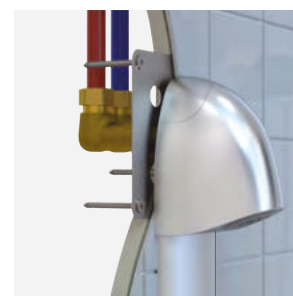
MULTIPLE INSTALLATION OPTIONS



Exposed water inlets



Recessed water inlets from beneath



Recessed water inlets from above

DELABIE, manufacturer's expertise

DELABIE, a 100% family-owned French company, founded in 1928, is the European market leader in water controls and sanitary equipment for public and commercial places. The company offers five product ranges specifically for this market: Commercial water controls, Hospital water controls, Accessibility and Hygiene accessories, Stainless steel sanitary ware and Specialist water controls. Over 2,000 DELABIE manufactured items, including international references, are exported from its factory in France to more than 90 countries. The company has 10 subsidiaries worldwide: Germany, Austria, Belgium, the Netherlands, United Kingdom, Spain, Portugal, Poland, United Arab Emirates (Dubai) and China (Hong-Kong). For many years, DELABIE has placed ecological concerns at the heart of its philosophy, offering products that are as stylish as they are responsible and sustainable. For our facilities, production methods, dematerialization, packaging, employee commitment... DELABIE is proud to have received the ECOVADIS gold medal in 2024.

CONTACTS

PR

Carole ARMSTRONG

Tel. +44 (0)1491 821820

carole.armstrong@delabie.co.uk

ADVERTISING

Eve WELLARD

Tel. +44 (0)1491 821820

eve.wellard@delabie.co.uk

Find DELABIE on these social networks

