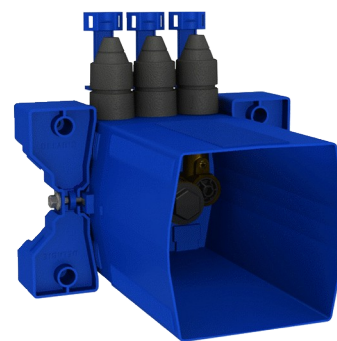


TEMPOMIX 3 recessed housing for showers

Ref. 794BOX1

Time flow, kit 1/2

2024 UK public price excluding VAT: £315.96



DESCRIPTION

TEMPOMIX 3 recessed housing for showers - Ref. 794BOX1

Waterproof recessed housing for TEMPOMIX 3 for showers, kit 1/2:
Collar with waterproof seal.
Hydraulic connection from the outside and maintenance from the front.
Top inlet.
Adjusts to all types of installations (rails, solid walls, panels).
Compatible with wall finishes 10 - 120mm (while maintaining the minimum recessing depth of 93mm).
Suitable for standard or "pipe in pipe" supply.
Stopcocks and flow rate adjustment, filters, non-return valves and cartridge are all integrated and accessible from the front.
TEMPOMIX 3 single control mixer F½".
Supplied in 2 kits: secure system flush without sensitive elements.
30-year warranty.
Order with control plates references 794218 or 794219.

ADVANTAGES



Installation recessed in wall



Waterproof housing is adjustable and modular










System tested to over 500,000 operations



100% waterproof housing

TECHNICAL CHARACTERISTICS

TEMPOMIX 3 recessed housing for showers - Ref. 794BOX1

| | |
|------------|---|
| Connector | ½" |
| Technology | Time flow |
| Height | 150mm |
| Depth | 93 - 190mm |
| Width | 225mm |
| Flow rate | 6 lpm |
| Norms | ACS       |
| Warranty |  |

