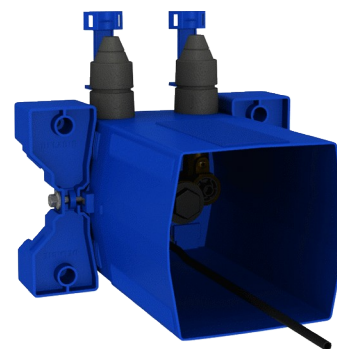


TEMPOMIX 3 recessed housing for basins

Ref. 794BOX3

Waterproof, kit 1/2

2024 UK public price excluding VAT: £315.96



DESCRIPTION

TEMPOMIX 3 recessed housing for basins - Ref. 794BOX3

Waterproof recessed housing for TEMPOMIX 3 for basins, kit 1/2:

- Collar with waterproof seal.
- Hydraulic connection from the outside and maintenance from the front.
- Adjusts to all types of installations (rails, solid walls, panels).
- Compatible with wall finishes 10 - 120mm (while maintaining the minimum recessing depth of 93mm).
- Suitable for standard or "pipe in pipe" supply.
- Stopcocks and flow rate adjustment, filters, non-return valves and cartridge are all integrated and accessible from the front.
- TEMPOMIX 3 single control mixer F $\frac{1}{2}$ ".
- Supplied in 2 kits: secure system flush without sensitive elements.

30-year warranty.
Order with control plates references 794200 or 794250.

ADVANTAGES



Installation recessed in wall





Waterproof housing is adjustable and modular



100% waterproof housing

TECHNICAL CHARACTERISTICS

TEMPOMIX 3 recessed housing for basins - Ref. 794BOX3

Connector	F $\frac{1}{2}$ "
Technology	Time flow
Height	150mm
Depth	93 - 190mm
Width	160mm
Spout length	110mm
Flow rate	3 lpm
Norms	ACS  
Warranty	