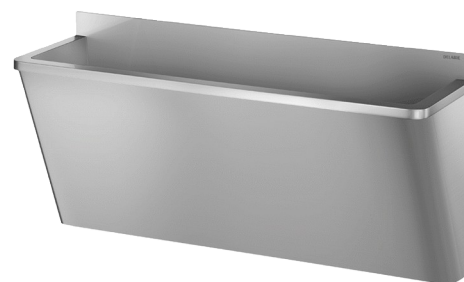


# Surgical scrub-up trough with low upstand

Ref. 18602015

Polished satin 304 stainless steel - 2 services - L. 1,600mm

2024 UK public price excluding VAT: £2,159.34



## DESCRIPTION

Surgical scrub-up trough with low upstand - Ref. 18602015

Wall-mounted surgical scrub-up trough with 75mm upstand.  
Suitable for hospitals and care facilities.  
Complies with the former HTM64 guidance and new Health Building Note 00-10: Part C - Sanitary Assemblies.  
Length 1,600mm, 2 services. Without tap hole.  
Bacteriostatic 304 stainless steel. Polished satin finish. Stainless steel thickness: 1.2mm.  
Smooth surface and rounded edges for easy cleaning.  
"Hygiene +" design: reduces bacterial niches, concealed trap, easy to clean.  
Drainage on the right.  
Without overflow.  
Supplied with fixing elements.  
CE marked. Complies with norm EN 14296.  
Weight: 29.8kg.  
30-year warranty.

## ADVANTAGES



Bacteriostatic 304 stainless steel

## TECHNICAL CHARACTERISTICS

Surgical scrub-up trough with low upstand - Ref. 18602015

Height	645mm
Length	1600mm
Width	400mm
Thickness	1.2mm
Finish	Polished satin 304 stainless steel
Norms	CE
Warranty	30 YEAR WARRANTY

