

# BIOSAFE mechanical basin mixer

Ref. 26216

Single hole mechanical mixer with no spout H. 95mm L. 110mm

2025 UK public price excluding VAT: £277.26


## DESCRIPTION

**BIOSAFE mechanical basin mixer - Ref. 26216**

Deck-mounted mechanical basin mixer  
Single hole mechanical mixer H. 95mm L. 110mm.  
No spout: hygienic flow straightener integrated into the body.  
Securitouch thermal insulation prevents burns.  
Ø 35mm ceramic cartridge with pre-set maximum temperature limiter.  
Thermal shocks are possible without removing the control lever or shutting off the cold water supply.  
Body with smooth interior and very low water volume (reduces bacterial development).  
Flow rate regulated at 5 lpm.  
Solid control lever.  
No pop-up waste.  
Mixer with copper tails and stopcocks Ø 15mm.  
Fixing reinforced by two stainless steel rods.  
Mechanical mixer ideal for healthcare facilities, retirement and care homes, hospitals and clinics.  
Single hole mixer suitable for people with reduced mobility.  
Mixer with 30-year warranty.  
Also available with PEX flexibles.

## TECHNICAL CHARACTERISTICS

**BIOSAFE mechanical basin mixer - Ref. 26216**

|                     |   |
|---------------------|---|
| Connector           | 1/2"  |
| Technology          | BIOSAFE mechanical mixer  |
| Height              | 180mm   |
| Length              | 220mm   |
| Drop height         | 95mm  |
| Spout length        | 110mm   |
| Flow rate           | 4 lpm   |
| Temperature limiter | Yes   |
| Finish              | Chrome-plated brass   |
| Norms               |  |



## ADVANTAGES



Hygiene: body with very low water volume



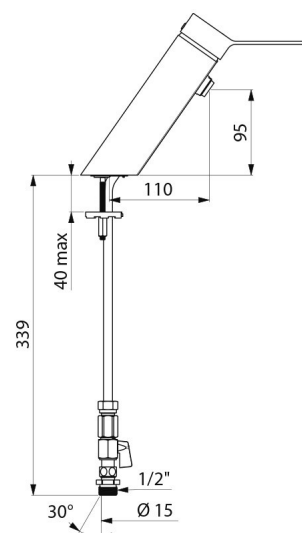
Maximum hygiene: mixer with no spout



Thermal shocks are possible without removing lever



Pre-set maximum temperature limiter



Warranty



Repairability

