

# SECURITHERM sequential thermostatic shower mixer

Ref. 9630

Thermostatique mixer with no non-return valves, bottom outlet







## DESCRIPTION

**SECURITHERM sequential thermostatic shower mixer - Ref. 9630**

SECURITHERM sequential thermostatic shower mixer.  
 Sequential thermostatic mixer: opens and closes with cold water.  
 Mixer with no non-return valves on the inlets (reduces bacterial proliferation).  
 No risk of cross flow between the hot and cold water.  
 Sequential mixer with anti-scalding failsafe: shuts off automatically if cold water supply fails.  
 Prevents cold showers: shuts off automatically if hot water supply fails.  
 Securitouch thermal insulation prevents burns.  
 Scale-resistant sequential thermostatic cartridge adjusts the flow rate and the temperature.  
 Temperature adjusts from cold water up to 39°C with temperature limiter set at 39°C.  
 Thermal shocks are possible.  
 Body with smooth interior (reduces bacterial proliferation).  
 Flow rate regulated at 9 l/min.  
 Chrome-plated brass body and Hygiene lever L. 100mm.  
 M1/2" bottom outlet.  
 Mixer with no wall connectors with filters integrated in the inlets, F3/4".  
 Mixer ideal for healthcare facilities, retirement and care homes, hospitals and clinics.  
 Sequential mixer suitable for people with reduced mobility.  
 Shower mixer with 30-year warranty.

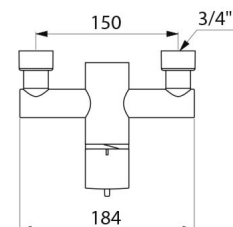
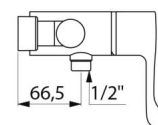
## ADVANTAGES

-  Sequential: opens/closes with cold water
-  Maximum hygiene: no non-return valves
-  SECURITHERM: optimum anti-scalding safety
-  Thermostatic: temperature stability

## TECHNICAL CHARACTERISTICS

**SECURITHERM sequential thermostatic shower mixer - Ref. 9630**

Technology	SECURITHERM Securitouch sequential thermostatic shower mixer
Length	184mm
Flow rate	9 lpm at 3 bar
Temperature limiter	YES
Finish	Chrome-plated brass



Norms



Warranty



Repairability

