

BIOSAFE mechanical basin mixer

Ref. 26216

Single hole mechanical mixer with no spout H. 95mm L. 110mm

DESCRIPTION

BIOSAFE mechanical basin mixer - Ref. 26216

Deck-mounted mechanical basin mixer
Single hole mechanical mixer H. 95mm L. 110mm.
No spout: hygienic flow straightener integrated into the body.
Securitouch thermal insulation prevents burns.
Ø 35mm ceramic cartridge with pre-set maximum temperature limiter.
Thermal shocks are possible without removing the control lever or shutting off the cold water supply.
Body with smooth interior and very low water volume (reduces bacterial development).
Flow rate regulated at 5 lpm.
Solid control lever.
No pop-up waste.
Mixer with copper tails and stopcocks Ø 15mm.
Fixing reinforced by two stainless steel rods.
Mechanical mixer ideal for healthcare facilities, retirement and care homes, hospitals and clinics.
Single hole mixer suitable for people with reduced mobility.
Mixer with 30-year warranty.
Also available with PEX flexibles.

TECHNICAL CHARACTERISTICS

BIOSAFE mechanical basin mixer - Ref. 26216

Connector	1/2"
Technology	BIOSAFE mechanical mixer
Height	180mm
Length	220mm
Drop height	95mm
Spout length	110mm
Flow rate	4 lpm
Temperature limiter	Yes
Finish	Chrome-plated brass

Norms



ADVANTAGES



Hygiene: body with very low water volume



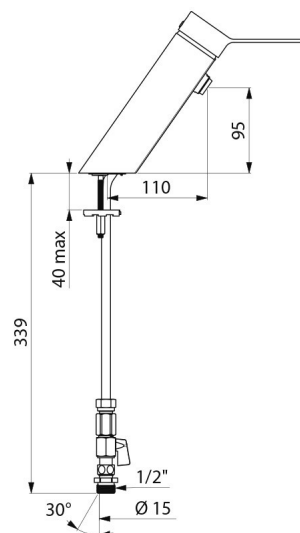
Maximum hygiene: mixer with no spout



Thermal shocks are possible without removing lever



Pre-set maximum temperature limiter



Warranty	
Repairability	