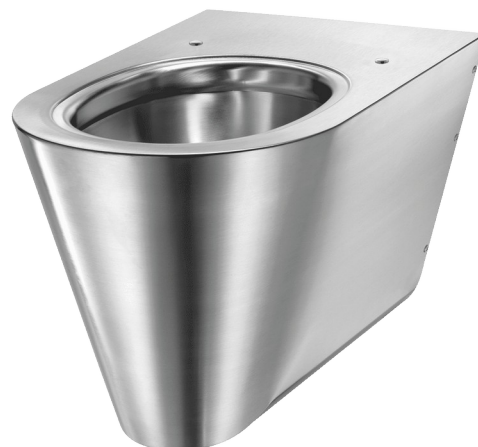


Wall-hung S21 S WC pan

Ref. 110310

Polished satin 304 stainless steel



DESCRIPTION

Wall-hung S21 S WC pan - Ref. 110310

Wall-hung WC pan, 360 x 350 x 535mm.
Compatible with all standard frame systems available on the market.
Elegant and simple design.
Bacteriostatic 304 stainless steel.
Polished satin finish.
Stainless steel thickness: 1.5mm.
One-piece pressed WC bowl, seam-free for easy maintenance and better hygiene.
WC bowl surface is polished with rounded edges for easy cleaning. Concealed perimetral flushing rim.
Horizontal water inlet: Ø 55mm.
Horizontal waste outlet: Ø 100mm.
Water saving: works with 4L or more of water.
Shrouded pan.
Pre-drilled holes for fixing the toilet seat. Supplied with stainless steel blanking caps when installed without toilet seat lid.
Quick and easy to install from the front thanks to a stainless steel mounting frame.
Supplied with fixing plate and 6 theft prevention TORX security screws.
CE marked. Complies with European standard EN 997 for 4L flush.
Weight: 11kg.
30-year warranty.
[Formerly ref: 0112030001]

ADVANTAGES



Bacteriostatic 304 stainless steel





Polished bowl surface



Elegant and simple design

TECHNICAL CHARACTERISTICS

Wall-hung S21 S WC pan - Ref. 110310

Height	350mm
Length	535mm
Width	360mm
Thickness	1.5mm
Finish	304 polished satin stainless steel
Norms	 
Warranty	