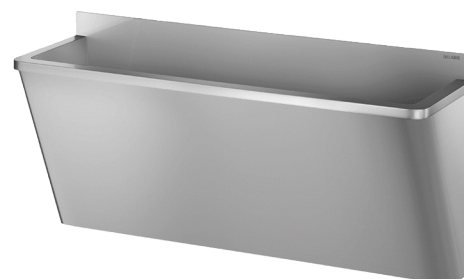


# Surgical scrub-up trough with low upstand

Ref. 186020

Polished satin 304 stainless steel - 2 services - "Hygiene+" Design



## DESCRIPTION

**Surgical scrub-up trough with low upstand - Ref. 186020**

Wall-mounted surgical scrub-up trough with 75mm upstand.  
Suitable for hospitals and healthcare facilities.  
Bacteriostatic 304 stainless steel. Polished satin finish. Stainless steel thickness: 1.2mm.  
Length 1,400mm, 2 services. Without tap hole.  
Smooth surface and rounded inside edges for easy cleaning.  
"Hygiene+": reduces niches where bacteria can develop, concealed trap, easy to clean.  
Drainage on the right. Without overflow. Supplied with fixing elements.  
CE marked. Complies with norm EN 14296.  
Weight: 26.6kg.  
30-year warranty.

## ADVANTAGES



Bacteriostatic 304 stainless steel

## TECHNICAL CHARACTERISTICS

**Surgical scrub-up trough with low upstand - Ref. 186020**

Height	645mm
Length	1400mm
Width	400mm
Thickness	1.2mm
Finish	Polished satin 304 stainless steel
Norms	CE 
Warranty	

